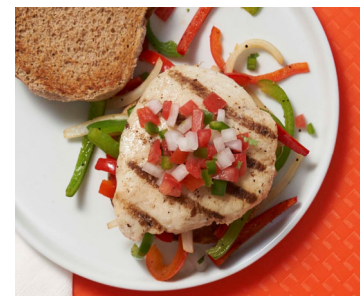




SEASONED GRILLED WHOLE MUSCLE CHICKEN BREAST FILLET, FULLY COOKED

Brand: Rich Chicks
MFG SKU: 17402
Case GTIN: 10852927006606
Origin: Product of USA
Allergens: NONE
Storage Temp: < 0 Deg. (F) / -17.8 Deg. (C)

Shelf Life: 365 Days
Code Dating: DD/MM/YY
Kosher: No
Serving Size: 2.66
Servings Per Case: 120
Meat/Grain Equivalency: 2M/MA



Packaging Specifications

Case Pack: 4/5 LB PG
Case Wt. (Net/Gross): 20 LBS AVG Net / 21.5 LBS AVG Gross
Case Cube: 1.01 (cu.ft.)
Case Dim: L: 18.60 W: 9.10 H: 10.30
Pallet Config.: 7 x 10 = 70 Cases/Pallet

Bid Specifications:

Fully Cooked Grilled Chicken Breast Fillet produced from White Whole Muscle Breast Fillets. No ground or mechanically formed products permitted. Product contains no Soy, no Egg, no Wheat and no Phosphates. Product to provide zero grams of trans fats and less than 350mg of Sodium. One fillet to provide 2 ounces Meat/Meat alternate per serving.

Nutrition Facts

Table with 2 columns: Nutrient Name and Amount/Percentage. Includes Total Fat 1.5g (2%), Sodium 350mg (15%), Protein 18g, and other nutrients.

* The Daily Value (DV) tells you how much a nutrient in a serving of food contributes to a daily diet. 2,000 calories a day is used for general nutrition advice.



17402

SEASONED GRILL MARKED CHICKEN BREAST FILLET FULLY COOKED WITH RIB MEAT

Ingredients: Chicken Breast With Rib Meat, Water, Chicken Protein Solution (Water, Chicken Protein), Seasoning (Salt, Sugar, Dextrose, Garlic Powder, Onion Powder, Spice, Natural Flavors), Modified Food Starch, Sodium Bicarbonate.

Heating Instructions: Appliances vary. Adjust as necessary. From Frozen, Place chicken breast strips on a lined (non-stick) sheet pan with a small amount of water. Cover completely with foil. Place in a pre-heated, 350°F convection oven for approximately 13-16 minutes or until heated to 165°F (or as dictated by state or local code) as verified by a calibrated thermometer.

NET WT. 20.00 LBS
KEEP FROZEN
PACK DATE: 09/08/20



CN Label: No NA

A MEAT/MEAT ALTERNATE LETTER OF EQUIVALENCY IS AVAILABLE UPON REQUEST.

Smart Snack Compliant: Yes

Signature: Melissa Cormier

Print: Melissa Cormier
Title: Compliance Manager
Date: 12/8/2020

Specifications are subject to change.

PRODUCED EXCLUSIVELY FOR: RICH CHICKS, LLC | 4276 N. TRACY BLVD. | TRACY, CA 95304



**Product Analysis Sheet/Product Formulation Statement
Meat/Meat Alternate (M/MA) Products**

Provide a copy of the label in addition to the following information on company letterhead signed by an official representative of the company.

Product Name: Seasoned Grill Marked Whole Muslce Chicken Breast Fillet, Fully Cooked Code No.: 17402

Manufacturer: Rich Chicks Case Pack/Count/Portion Size: 20 lb, 120/2.66oz servings per case

I. Meat/Meat Alternate

Please fill out the chart below to determine the creditable amount of Meat/Meat Alternate

Description of Creditable Ingredients per Food Buying Guide	Ounces per Raw Portion of Creditable Ingredient	Multiply	Food Buying Guide Yield	Creditable Amount *
Grilled Chicken Breast	2.86	X	70 %	2.00
A. Total Creditable Amount¹				2.00

*Creditable Amount - Multiply ounces per raw portion of creditable ingredient by the Food Buying Guide yield.

II. Alternate Protein Product (APP)

If the product contains APP please fill out the chart below to determine the creditable amount of APP. If APP is used, you must provide documentation as described in the Example of Documentation on the next page for each APP used.

Description of APP, manufacture's name, and code number	Ounces Dry APP Per Portion	Multiply	% of Protein As-Is*	Divide by 18**	Creditable Amount APP***
N/A		X	1		
		X	1		
B. Total Creditable Amount¹					
C. TOTAL CREDITABLE AMOUNT (A + B rounded down to nearest ¼ oz)					2.00

*Percent of Protein As-Is is provided on the attached APP documentation.

**18 is the percent of protein when fully hydrated.

***Creditable amount of APP equals ounces of Dry APP multiplied by the percent of protein as-is divided by 18.

¹Total Creditable Amount must be rounded down to the nearest 0.25oz (1.49 would round down to 1.25 oz meat equivalent). Do not round up. If you are crediting both M/MA and APP, you do not need to round down in box A until after you have added the creditable APP amount from box B.

Total weight (per portion) of product as purchased 2.66 oz.

Total creditable amount of product (per portion) 2.00 oz.

(Reminder: Total creditable amount cannot count for more than the total weight of product)

I certify that the above information is true and correct and that a 2.66 ounce serving of the above product (ready for serving) contains 2.00 ounces of equivalent meat/meat alternate when prepared according to directions. I further certify that any APP used in the product conforms to the Food and Nutrition Service Regulations (7 CFR Parts 210, 220, 225, 226, Appendix A) as demonstrated by the attached supplier documentation.

Melissa Cormier
Signature of Company Official

COMPLIANCE MANAGER
Title

MELISSA CORMIER
Printed Name

12/08/2020 209-879-4104
Date Phone Number