



Opportunity Buys

We proudly offer a diverse line of high-quality non-commodity products for commercial distribution to school and other food service industry customers.

Our deals include options for any need including full muscle chicken products, fully cooked sliced and formed meats, and great breakfast and snack choices.





#1 Whole Muscle Chicken

#1 RTC Breaded Chicken Breast Slider



Price: \$2.55 lb.
(\$25.50/case
or \$.63/serving)

Code: 74947
PAC: 10 lb. case
40 serv/case

#1 FC Seasoned Shredded Chicken Breast



Price: \$3.35
(\$33.50/case)

Code: 131521
PAC: 10 lb. case

Products and pricing are as of 2/25/21 and are subject to change.



Breaded Chicken (Full Muscle)

FC Whole Grain Breaded Spicy Chicken Breast Filet



Price: \$2.55 lb.
(\$25.50/case
or \$.63/serving)

Code: 94157
PAC: 10 lb. case
40 serv/case
Serving Size: 4 oz
2M/MA, 1 Grain

RTC Breaded Spicy Breast Filet



Price: \$2.85 lb.
(\$57.00/case
or \$.81/serving)

Code: 122244
PAC: 20 lb. case
70 serv/case
4.5 oz filet

RTC Breaded Chicken Breast Filet



Price: \$2.85 lb.
(\$57.00/case
or \$.81/serving)

Code: 122214
PAC: 20 lb. case
70 serv/case
4.5 oz filet

Products and pricing are as of 2/25/21 and are subject to change.



Chicken (Full Muscle)

FC Unbreaded Grill-Mark Filet



Price: \$2.65 lb.
(\$26.50/case
or \$.40/serving)

Code: 96626
PAC: 10 lb. case
65 serv/case

FC Unbreaded Breast Fillet with Chimichurri (Herb Marinade)



Price: \$2.65 lb.
(\$26.50/case
or \$.58/serving)

Code: 90246
PAC: 10 lb. case
45 serv/case

RTC Breaded Chicken Thigh Filet



Price: \$2.35 lb.
(\$23.50/case
or \$.67/serving)

Code: 99143
PAC: 10 lb. case
Approx. 35 serv/case
3.5-4 oz filet

Products and pricing are as of 2/25/21 and are subject to change.



Breaded Chicken

FC Whole Grain Tender



Price: \$2.50 lb.
(\$25.00/case
or \$.62/serving)

Code: 97302
PAC: 10 lb. case
40 serv/case
(3 pieces per serving)
1.5 oz tenders
2 M/MA, 1.25 Grains

RTC Breaded Chicken Breast Popcorn



Price: \$1.79 lb.
(\$17.90/case
or \$.44/serving)

Code: 92000
PAC: 10 lb. case
40 serv/case

RTC Spicy Breaded Boneless Wings



Price: \$2.45 lb.
(\$24.50/case
or \$.61/serving)

Code: 93852
PAC: 10 lb. case
40 serv/case

Products and pricing are as of 2/25/21 and are subject to change.



Bone-In Chicken

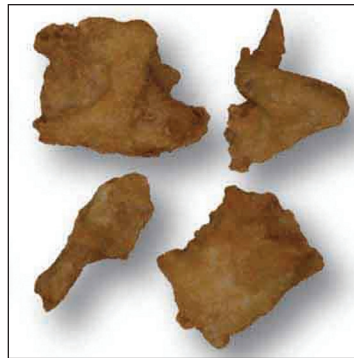
FC Random Roasted Chicken Parts



Price: \$1.79 lb.
(\$17.90/case
or \$.61/serving)

Code: 95047
PAC: 10 lb. case
Approx. 29 serv/case

FC Random Breaded Chicken Parts w/ Honey



Price: \$1.79 lb.
(\$17.90/case
or \$.63/serving)

Code: 94511
PAC: 10 lb. case
Approx. 28 serv/case

FC Breaded Chicken Drumstick



Price: \$1.65 lb.
(\$16.50/case)

Code: 90266
PAC: 10 lb. case
Approx. 25/case

Products and pricing are as of 2/25/21 and are subject to change.



Cheese

Oven Ready Mozzarella Cheese Sticks



Price: \$44.16/cs
(\$.44/serving)

Code: 835
PAC: 12 lb. case
99 serv/case
2 pieces/serving

Beef

FC Beef and Chicken Meatball 1 oz



Price: \$2.89 lb.
(\$28.90/case
or \$.54/serving)

Code: BVBCB010
PAC: 10 lb. case
53 serv/case
3-1 oz meatballs/serv

Products and pricing are as of 2/25/21 and are subject to change.



Fresh Chicken

Fresh Boneless Skinless Chicken Breasts (Super-Trim, Clean Label)



Price: \$6.00 lb.
(\$30.00/case)

Code: 50002
6 oz filet
PAC: 5 lb. bag
13 breasts/bag

Fresh Chicken Thighs, Boneless, Skinless



Price: \$4.50 lb.
(\$22.50/case)

Code: 50004
PAC: 5 lb. bag

Fresh Jumbo Party Wings



Price: \$5.00 lb.
(\$25.00/case)

Code: 50005
PAC: 5 lb. bag

Products and pricing are as of 2/25/21 and are subject to change.



Steak Meat

RTC Beef Philly Sandwich Steaks



Price: \$3.90 lb.
(\$39.00/case
or \$.97/serving)

Code: 207004-100
PAC: 10 lb. case
40 serv/case

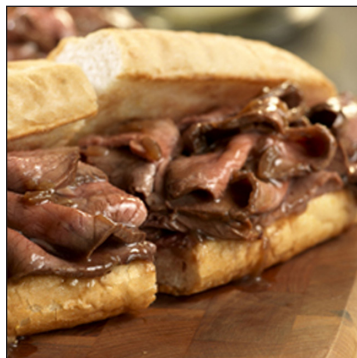
RTC Chicken Steaks 3 oz



Price: \$3.02 lb.
(\$30.25/case
or \$.56/serving)

Code: 106003
PAC: 10 lb. case
54 serv/case

FC Sliced Roast Beef



Price: \$3.92 lb.
(\$157.00/case
or \$.94/serving)

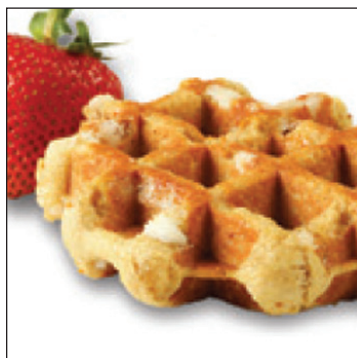
Code: 925118
PAC: 40 lb. case
4- 10 lb. bags
167 serv/case

Products and pricing are as of 2/25/21 and are subject to change.



Artisan Belgian Liege Waffles

Strawberry Artisan Belgian Liege Waffle (IW)



Price: \$42.48/cs
(\$.59/serving)

Code: S722ST
PAC: 10 lb. case
72 serv/case
Meets 2 grains

Apple Spice Artisan Belgian Liege Waffle (IW)



Price: \$42.48/cs
(\$.59/serving)

Code: S722AS
PAC: 10 lb. case
72 serv/case
Meets 2 grains

Products and pricing are as of 2/25/21 and are subject to change.